

Disabled Call System

2572/100-110



Features:

- Designed to comply with all regulations & recommendations
- Dedicated system, not made from nurse-call points
- Call point pilot lights
- Uses blue LEDs to avoid confusion
- Fits standard 25mm MK type back boxes
- Low standby current
- High visibility, high contrast printing
- Built in battery charger
- Remote sounder available

The Audix Assist DDA call system provides a perfect solution for disabled toilets in buildings wishing to conform to Building Regulations Document M (access rights for the disabled) and the Disability Discrimination Act.

This simple 2 wire system has been specifically designed to meet the needs of disabled service users and conforms to all the relevant requirements including: the Disability Rights Commission Code of Practice, English Tourist Council recommendations and RNIB signage guidelines. The use of blue indicators, as well as a loud siren ensures a speedy response to calls.

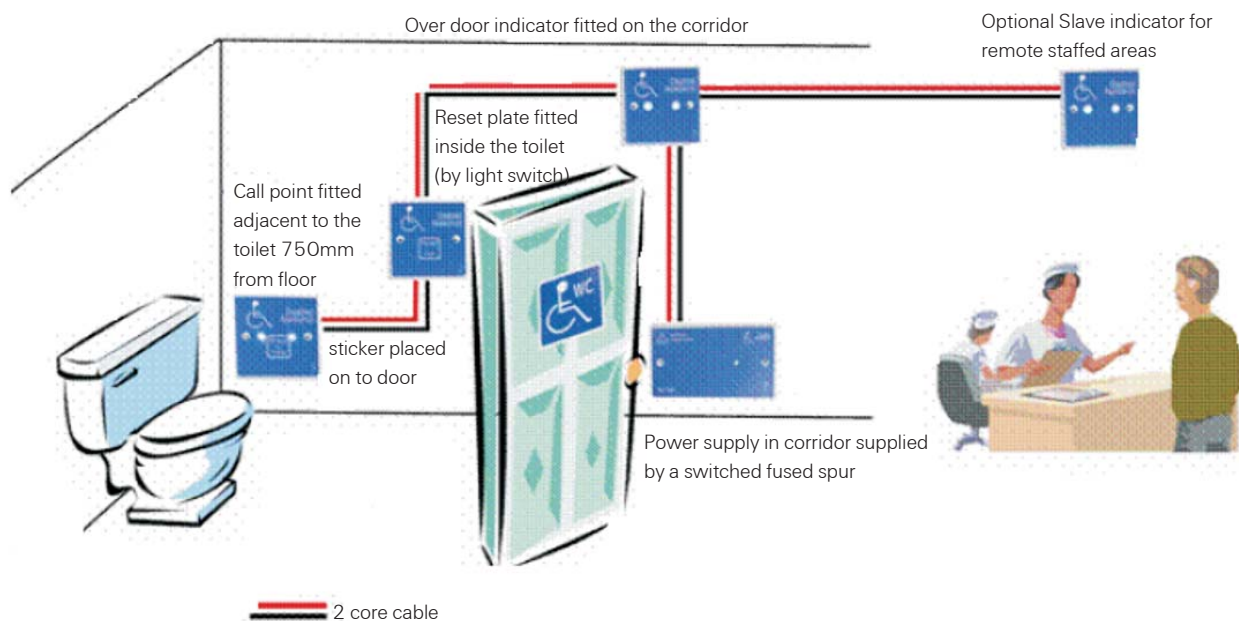
From our research, many requests for help are due to silly things, such as people turning off the lights in a disabled toilet, leaving the user literally in the dark, so on all call points the call LEDs blink every 2 seconds, guiding people to the points in the dark. The call points are wall mounted not ceiling pull cords; this is deliberate to prevent false calls from people confusing the call system with the light switch.

Pull cords are hard to use by people who have fallen to the floor and are difficult to locate in the dark, they often get in the way and sometimes get tied up by cleaners mopping floors, thus reducing their effectiveness.

DDA call comes in kit form with all the basic components required for a fully compliant system. Additional parts are available separately.

Disabled Call System 2572/100-110

DATA SHEET



Ordering Information

Part Number	Description
2572/100	Complete disabled alarm toilet kit comprising: Power Supply (2572/101), Over Door Indicator (2572/104), Reset Point (2572/102), Call Point (2572/103), Disabled toilet Sticker. Does not include cable.
2572/110	Complete disabled alarm toilet kit comprising: Power supply (2572/101), Over Door Indicator (2572/104), Reset Point (2572/102), Pull Cord - call point (2572/109), Disabled Toilet Sticker. Does not include cable
2572/101	250mA PSU and SLA Battery Charger. Double gang switch plate size to fit any 25mm deep back box.
2572/102	Reset point. Single gang switch plate size to fit any 25mm deep back box.
2572/103	Call point. Single gang switch plate size to fit any 25mm deep back box
2572/109	Pull cord - call point
2572/104	Over door indicator and sounder. Single gang switch plate size to fit any 25mm deep back box
2572/105	Slave indicator. Single gang switch plate size to fit any 25mm deep back box
2572/106	4 way slave indicator. Double gang switch plate size to fit any 25mm deep back box
2572/107	Slave relay. Single gang switch plate size to fit any 25mm deep back box
2572/108	12V 0.8AH battery pack. Double gang switch plate size to fit any 25mm deep back box

For further information on how ADT can help you, contact your local office or phone free on **0800 010 999** or visit us at www.adt.co.uk

Head Office: ADT Fire and Security plc, Security House, The Summit, Hanworth Road, Sunbury-on-Thames, Middlesex TW16 5DB.

ADT and the ADT logo are registered trademarks of ADT Services AG and are used under license.

ADT reserves the right to modify or withdraw any product or service without notice.



tyco / Fire & Security



Ref No PSPV098A Issue 1 April 2007

© 2007 Tyco Fire & Security plc