



Domonial

Wireless Security System

Features:

- Compact Control Panel
- Innovative Peripherals
- Easy Installation
- Rich Maintenance Tools
- Superior Flexibility in Daily Use
- XM10 Transmitter
- Compliant to latest European 2.7GHz EMC requirement (mandatory for CE compliancy)
- Compliant with EN50131 rev. 2008
- Corner mount bracket (note: wall mount bracket was already included)
- Protected PCB for PI version.

Domonial is a compact, wireless security system for residential installations. Its built-in communicator brings remote maintenance and diagnostics into general use for routine inspections and alarm activations. The optional GSM module can be used as a back up for the PSTN or as the main network connection. A great choice of innovative controlling equipment helps provide a system best-fitted to every user's lifestyle.

Domonial main features

Wireless system with wired extensions: programmable output, XM10 transmitter, remote audio devices and external tamper

- Built-in sounder for intruder and fire alarm
- Built-in PSTN communicator and optional plug-on GSM module for connection to a monitoring centre or nominated number: protocols Secom3, Contact Id, Cesa, Surtec
- Built-in speaker/microphone: listen-in facility and talk initiated by operator or user.
- Full set, part set and annex set functions for protection of the entire site or separate areas
- Leading edge radio transmission technology

a vital part of your world

tyco

*Fire & Integrated
Solutions*

Domonial Wireless Security System

TCU8EU-ADT - LCD Keypad with built in TAG reader

- EN50131-1 Security Grade 2, Environmental Class II
- Up to 10 users (codes and TAG)
- Functions : Set, Unset, Alert, X10 remote, locked in case of 5 wrong identifications
- New "alpha" radio protocol Bracket supplied
- Power supply : 1 battery LI03V (supplied) changeable by the end user
- Battery life : ~1 year
- Tamper : opening and wall mounted
- Size : 62x155x28mm



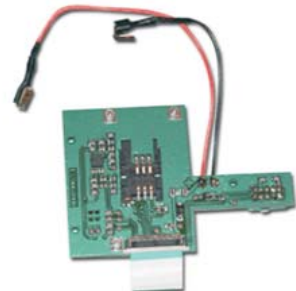
TP800LP - Wired Audio Device

- Wired audio device
- Half duplex Up to 3 per installation
- Size : 85x135x25mm



GESEM835IS-F - GSM Dual band module

- EN50131-1 Security Grade 2, Environmental Class II
- Operator free
- Can be used for backup network or as main network



TCC8M Round set/unset RF Fob



TCM800HF - Panic Button

- 1 function button
- Transmission control indicator LED
- 868.25 MHz



Domonial Wireless Security System

IR8M and IRPI8M - Passive radio infrared detector

- 11M x 12M detection range
- Selectable Pet Immunity (0, 18 or 36Kg) (IRPI8M only)
- Patented Look-down Mirror
- EN/TS50131-2-2 Grade 2, Environmental Class II
- Front & Rear Tamper
- Dual Protocol for Compatibility with Domonial, VISTA and Galaxy systems
- Battery Life: >4.5 yrs Domonial, >3 yrs Galaxy
- 10 minute Auto test with active LED
- Advanced Dual Slope Temperature Compensation
- Selectable Pulse Count and Sensitivity
- Bi-Directional RF communications
- Stylish and practical housing design

- Operating Temperature -10° C to 55° C
- Dimensions: 11.2 x 6 x 4 cm
- Compliant to latest European 2.7GHz EMC requirement (mandatory for CE compliancy)
- Compliant with EN50131 rev. 2008
- Corner mount bracket (note: wall mount bracket was already included)
- Protected PCB for PI version.



DT8M and DTPI8M - Dual Technology Detector

- Detection range 15 x 18 m
- Power 4 batteries 1.5V AA
- Battery life 3 years (V2GY), 4.5 years (Alpha)
- Microwave Frequency 24.200 GHz (K-band)
- Dimensions 125 x 75 x 52 mm



DO800M - Door/window compact magnetic contact

- EN50131-1 Security Grade 2, Environmental Class II
- New "alpha" radio protocol
- Power supply : 1 battery LI03V (supplied)
- Battery life : ~5 years
- Tamper : opening and wall mounted
- Size : 100x22x23mm



SEF8M HON Domonial RF External Siren Dual Protocol



DF8M - Smoke Detector

- Miniature smoke detector
- Detection coverage : 100m²
- Power supply: 1 battery LI03V supplied
- Battery life : ~8 year
- Tamper : opening
- Dimensions : 102x45mm



Domonial Wireless Security System

DODT8M - Door Contact with Auxiliary Input

- Internal and External contacts work independently
- Auxiliary input loop has tamper protection loop
- EN/TS50131-2-6 Grade 2, Environmental Class II
- Front & Rear Tamper
- Enclosure protection: IP:30 / IK:04
- Compatibility: Galaxy G2 (with RF portal) and Domonial
- Battery Life: >4 yrs
- Dimensions: 135 x 100 x 36 mm
- Operating Temperature -10° C to 55° C
- Weight with Battery: 70g
- Complete with Battery



SHK8M and SHKC8M - Viper Shock Sensor

- Detection range 2.5m radius
- Power 1 battery 3V CR123A
- Battery life 4 years (V2GY), 5 years (Alpha)



FG8M - Glassbreak detector

- Detection range: 7.6m radius
- Power: 2 batteries 3V CR123A
- Battery life: 6 years (V2GY), 7 years (Alpha)
- Tamper : rear tamper
- Dimensions: 11.5 x 7.2 x 2.7 mm



DET8M - Temperature and Flood Sensor

- Max cable length
DET8M to FP280: 5m
DET8M to intrusion detector: 100m
- Power: 1 battery 3V CR123A
- Battery life: ~7 years
- Tamper: on opening
- Dimensions
Sensor & bracket: 88.9 x 40.6 x 30.5 mm
Flood probe: 38.1 x 25.4 x 9.4 mm



T280R Remote Refrigerator Probe to be used with RFFlood and Temperature sensor



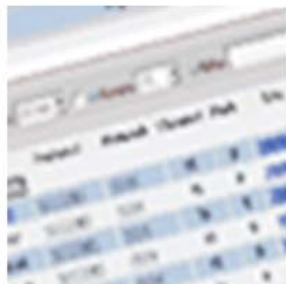
Domonial Wireless Security System

Maintenance tools & Alarm Receiver

The Domonial alarm system is programmed and maintained using software tools developed for standard platforms:

Local and remote programming and maintenance on PC

- Windows 2000, XP support, serial connection to the panel using specific cable, remote connection using secured modem Domodem
- User-friendly user interface with online installation guide and saving and reporting facilities
- Reference: DOMOPC



Local programming tool for PDA

- Palm OS support, serial or USB connection to the panel using specific cable
- Interactive screens with a rich set of programmable features
- Reference DOMOPDA



IST Technical server, PE Alarm receiver, WAP portal

- ISDN connection with dynamic channel allocation
- Audio and image processing for alarm verification
- Network services for automated installations maintenance
- Wap portal application

Feature	Specification	Details
Zones / sensors	30	The Domonial panel can register up to 32 peripherals in different sensors, keypads, sounders and receivers configuration.
Keypads	4	
Keyfobs	10	
Wireless sirens indoor/outdoor	4	
Receivers : Radio and X10 plugs, IRVideo sensors	12	
Alert functions	3	
Users	Up to 10	The master user sets up other users
Full set, Part set, Annex set	3 protection areas	
Built-in sounder	90 dBA	7 levels and progressive mode
Built-in audio verification	Speaker/microphone	
Event log	1000	
Narrow band FM radio frequency	10 sub-channels in the 868-870 MHz band with anti-jamming technology	
Wired output	1	Programmable
X10 extension	1	Connector to XM10 transmitter
Wired audio modules extension	Up to 3 TP modules	
Built-in PSTN communicator	1	
Optional GSM communicator	1	
System integrity and diagnostics	Tamper protection, Adaptive radio jamming detection, Monitoring of peripheral radio transmission, power supply and PSTN/GSM	

SPECIFICATIONS

Control Panels

ADT Safebox compact wireless control panel with built-in digital communicator and 2-way audio verification, 32 detection zones and 3 partitions, order battery BA04V35 separately

CMI8DB-ADT-7	For use in the Netherlands and Germany
CMI8FR-ADT-7	For use in France and Switzerland
CME8FR-ADT7G	With build-in GPRS communicator, for use in France and Switzerland
GESEM835IS-F	GSM Module for Safebox/Domonial
TP800LP	Remote wired audio station
ETH800	Ethernet module for Safebox

Keypads, tags and keyfobs

TAG-G	Proximity Tag with ADT logo
TCB800M	Bi-directional 4 Button Keyfob, 1 x 3V CR2032 included
TCM800HF	Radio Panic button, 1 x 3V CR1/3 N included
TCU8EU-ADT	ADT 2 way radio programmable LCD keypad for Safebox, 1 x 3V CR123A included

Accessories

SEF8M	Hon Domonial RF External Siren Dual Protocol
SI800M	Radio Indoor Sounder, 4 x 3V CR123A included

Radio Sensors

DO800M	Radio door contact, 1 x 3V CR123A included - white
DO800M-A	Radio door contact, 1 x 3V CR123A included - white, with NFA2P approval
DO800M2	Radio door contact, 1 x 3V CR123A included - brown
DODT8M	Radio door contact with separate supervised input, 1 x 3V CR123A included
SHK8M	Radio viper Shock sensor, white, 1 x 3V CR123A included
SHK8M	Radio viper Shock sensor with magnetic contact, white, 1 x 3V CR123A included
SHK8M2	Radio viper Shock sensor with magnetic contact, brown 1 x 3V CR123A included
IR8M	Radio passive infra-red detector detector, 1 x 3V CR123A included
DT8M	Radio dual technology detector, 4 x 1.5V AA Energizer L91 included
DTPI8M	Radio pet immune dual technology detector, 4 x 1.5V AA Energizer L91 included
IRPI8M	Radio pet immune (36Kg) passive infra-red Detector, 1 x 3V CR123A included
FG8M	Radio glassbreak detector, 2 x 3V CR123A included
DFO800M	Radio smoke detector, 1 x 3V CR123A included
DET8M	Radio flood and temperature sensor, 1 x 3V CR123A included
T280R	Remote Refrigerator Probe for DET8M

Batteries

BA04V35	Battery 4V-3.5Ah for Safebox/Domonial panel
TY-6205-BL1	Varta Li-MnO ₂ (3V / 1500mAh) Battery; Size CR123A
TY-ER14335-BL1	Saft Li-SOCI ₂ (3.6V / 1650mAh) Battery; Size 2/3AA
TY-CR13N-BL1	Gold Peak Li-MnO ₂ (3V / 160mAh) Battery; Size CR1/3N

For further information on how we can help you please visit our website at www.tycofis.com or e-mail us on tycofis@tycoint.com. The right is reserved to modify or withdraw any product or service without notice. PS1227TFIS Issue 2 December 2011 © 2011

tyco

*Fire & Integrated
Solutions*

a vital part of your world