



TXG: The Efficient way to control a Site Wide Emergency Management System

Tyco Expert Graphics is a fully featured emergency management system that has been specifically designed to present alarm information clearly and precisely, to speed up response times and ensure that the most appropriate response decisions are made.

### Single or Multiple Operator System

TXG is a true client server based system meaning that one server-held database can be accessed by a number of operator workstations and PC's. Multiple dedicated operator workstations can be positioned on-site in multiple locations for use by security and emergency management personnel. In addition non-dedicated PC's can be connected via the IT network or remotely over the internet for remote system management or maintenance purposes. As the system is supported by a single database any changes made are immediately to all the users of the system. This can dramatically reduce system maintenance costs

### Designed for Emergency Management

TXG is designed specifically for managing fire alarms and other emergencies. It is fully integrated with redundant communications to existing and new fire alarm panels and provides a specially designed user interface arranged to be easy and intuitive to operate for guards and other emergency responders. The user interface is designed to be specifically suitable for operating via a touchscreen with gloved hands and can be installed in such a way that the software program cannot be accidentally shut down. Integration features such as video, email and analogue data are done in such a way that it is optimised for use in emergency situations:

## TXG Tyco Expert Graphics

### Emergency Management System

#### Features:

- Provides annunciation, status display, and control in both normal and emergency situations
- Developed by Tyco specifically to provide monitoring and control of fire protection life safety systems
- Supports a range of fire detection systems
  - Minerva® MX
  - Minerva®
  - Simplex 4100 range 4100, 4120, 4020, 4100U with upgrade paths to 2120
  - Zettler Zetfas
  - Wormald PBS16
  - Tyco Fast 2000
- Multiple workstations can be configured for specific functions or redundant operation
- Single monitor or two monitor (text and graphics) support at each workstation.
- Link up with I.P. CCTV camera systems, no additional wiring, reduced installation cost for a fully integrated fire \ CCTV system
- Compatible with Flamevision® FV300 array based IR flame detectors with built in CCTV
- MX Hotspot, chromatic analogue display. Programmable tracking of analogue values. Changes display colour in response to changes in analogue value from a selected number of MX devices.
- Trending diagrams of analogue values helps reduce maintenance time and cost
- Export analogue values to Excel for in depth analysis
- Audio descriptions of screens can be played when they are displayed or played when an event occurs
- High level user interface allows end user to make changes to point attributes and layout further reducing lifetime cost of ownership.

### Video Verification

The IP Video feature allows real-time images of the area at risk to be displayed in the event of an alarm or fault. Video capture of the affected area appears on the TXG screen automatically, allowing the severity of the situation to be assessed quickly and the appropriate executive action to be taken. For less serious incidents, expensive and unnecessary plant shut downs can be avoided. In more critical situations, accurate information can be quickly and efficiently communicated to the response team and provide the opportunity to reduce financial loss and greatly improve safety.

**tyco**  
Fire & Integrated  
Solutions

# TXG Tyco Expert Graphics Emergency Management System

TXG is totally Scaleable



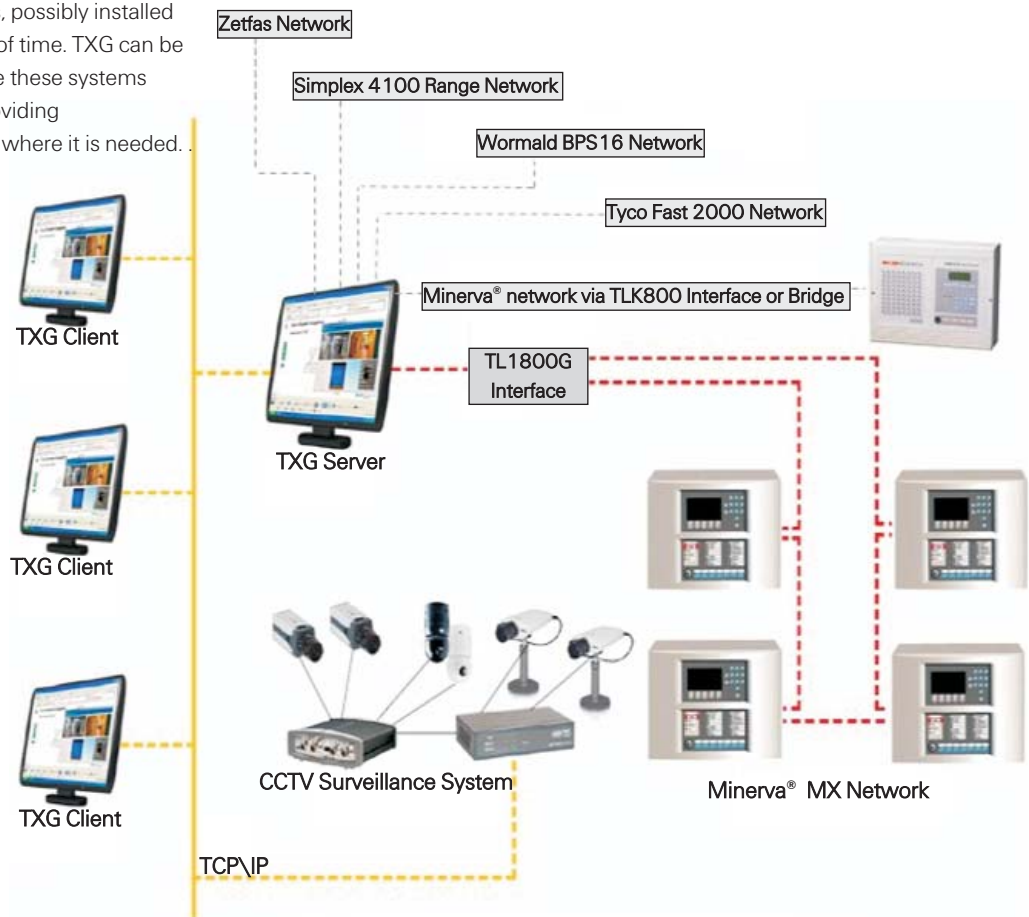
.....From a Single Fire Alarm Panel Connected to a TXG Server.....

The modest additional cost of a single TXG client / server is easily justified when the benefits that a Graphical User Interface bring are considered.

TXG with direct connection to a single Minerva® MX panel

.....To a Complex installation with multiple Diverse Networks and Distributed Clients

Large multi-building facilities may have a number of fire detection networks, possibly installed over an extended period of time. TXG can be used as a hub to integrate these systems with a number of clients providing annunciation and control where it is needed.



# TXG Tyco Expert Graphics Emergency Management System

## Long Term Support

Tyco Expert Graphics provides annunciation, status display, and control for various fire detection and alarm systems including Minerva® MX networks incorporating the latest MX Technology® fire detection. It also supports the predecessor Minerva® fire detection systems thus ensuring that future updates from Minerva® to MX Technology® can be accommodated. TXG also has the capability to interface with various other legacy fire detection panels and offers interfaces to Zettler® Zetfas and Wormald® PBS as standard. This level of flexibility ensures that TXG can be used to manage single buildings or large campuses with a variety of fire & emergency systems

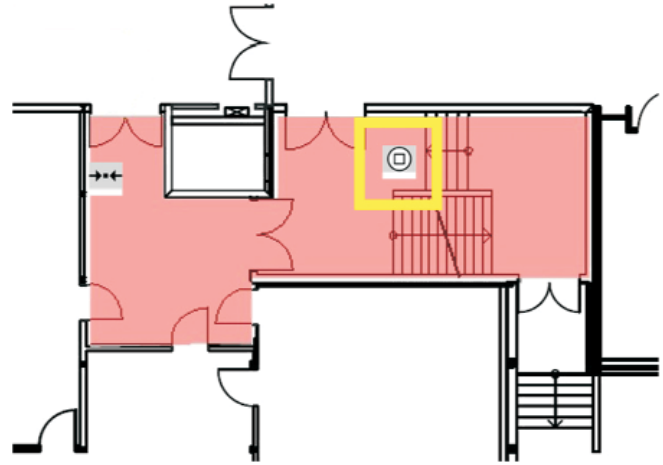


Support for two monitors. Typically one monitor displaying the graphics and a second monitor displaying the current alarm/event list

## Simplification

Much of the work involved in configuring TXG has been simplified through the automatic import of panel configurations and the ability to use a wide range of input data file types including GIF, JPG, bitmap, AutoCAD®, Vector and WAV files.

System maintenance can be carried out via the high level user interface with the ability to edit the position and attributes of point icons as well as make changes to drawing layouts. As well as simplifying maintenance, being a true client server application means that a number of on-site or off-site workstations can interrogate the database with pre-defined security levels to facilitate the required combination of access and control.



## MX Hotspot

Illustration of MX Hotspot highlighting an area of the TXG map display to represent an environmental change. TXG uses the analogue values from smoke, temperature or gas sensors to adjust the colour of a zone. This not only helps with verification of emergency situations but provides a quick visual indication to Emergency Responders and Security personnel whether or not it is safe to enter an area during emergency situations.

## CCTV Integration

TXG is compatible with American Dynamics Intellex® or Axis IP cameras and Video IP servers and can be used for integrating new or existing CCTV systems.

## Notification by Email

When an events occurs TXG can send notification texts by email or SMS to a predefined group of people when an event occurs. On a day to day basis this can automate first line response to faults and during emergencies can alert personnel, on and off site, to selected events & emergencies

## Audio Notification

Audio files can be played in response to specific user interface screens or specific events. This ensures that emergency situations are quickly drawn to the attention of key staff and that new or inexperienced staff are quickly reminded of the required response

## Additional Functions and Features

- Centralised security administration means that operator accounts are administered through the TXG client's common database
- Mouse, keyboard or touch-screen control with full multimedia compatibility
- Dual language switching
- The ability to display live video when specific predefined alarm conditions occur
- Easy to configure and set-up. No special networking or PC training required
- Facilities and maintenance management report and analysis tools are available Response buttons with configurable icons or text provide control switches specific to any operation being performed
- Uses a combination of symbols, floor plans, pictures, text and video to communicate events
- Standard MX and Minerva® symbol libraries supplied
- Gives instructions on what emergency action should be taken
- Prints maps and instructions to assist response teams
- History logging recallable or printable by event, dates, device, or a host of other available filters
- The advanced filter allows the history report to be specifically limited to a particular range or date period.
- Commands to control outputs from the Graphical User Interface
- Events can be accepted individually or can be "auto-accept"
- Supports all standard PC image file types (i.e. GIF, JPG, BMP), AutoCAD® & Vector file types

## Ordering Information

508.040.100	TXG USB Dongle/Licence/Software
508.040.001	TXG001 – Single Client Station - first panel
508.040.002	TXG004 – Single Client Station - panels 2 to 4
508.040.003	TXG010 – Single Client Station - panels 5 to 10
508.040.004	TXG020 – Single Client Station - panels 11 to 20
508.040.005	TXG999 - Single Client Station - panels 21 to unlimited
508.040.011	TXG-C Additional Client licences
508.040.021	TXG-MIN80 Minerva driver licence
508.040.023	TXG-ZETA Zetaddress/FILnet driver licence
508.040.024	TXG-ZETF – Zetfas/FILnet driver licence
508.040.025	TXG-OPC - OPC Alarm / Event & Data Access Server Licence
508.040.027	TXG-CPP - SIMPLEX CPP driver
508.040.033	TXG-PBS/FAST DRIVER

For further information on how we can help you, please visit our website at [www.tycofis.com](http://www.tycofis.com) or e-mail us on [tfis.fda.uk@tycoint.com](mailto:tfis.fda.uk@tycoint.com).  
The right is reserved to modify or withdraw any product or service without notice. PSF206TFIS Issue 4 September 2010 © 2010

*a vital part of your world*

**tyco**  
Fire & Integrated  
Solutions