



Tyco Expert Graphics provides annunciation, status display, and control for various fire detection and alarm systems including MX networks incorporating the latest MX Technology™ fire detection systems. It also supports the predecessor Minerva® fire detection systems thus ensuring that future updates from Minerva® to MX technology™ can be accommodated. Additional support is provided for Simplex 4100U, Zetfas and Fast2000\PBS (Token ring format).

TXG is a Microsoft Windows® based graphical interface with a high resolution colour display. Responsive touch-screen (optional) buttons with realistic icons provide control switches specific to the operation being performed. Utilizing a combination of symbols, floor plans, pictures, text, voice messages and video input, TXG displays the precise location and gives instructions on what emergency action should be taken. The display can be configured to track detector inputs by changing the colour of areas in response to changes in analogue value. A detailed map of the area affected can be printed automatically for use by personnel responding to an emergency. Prompt response to a fire emergency, with the correct action, provides the opportunity to reduce financial loss and greatly improves safety.

Much of the work involved in configuring TXG has been simplified through the automatic import of panel configurations and the ability to use a wide range of input data file types including GIF, JPG, bitmap, AutoCAD®, Vector and WAV files.

## TXG Tyco Expert Graphics

### MX Addressable Fire Detection

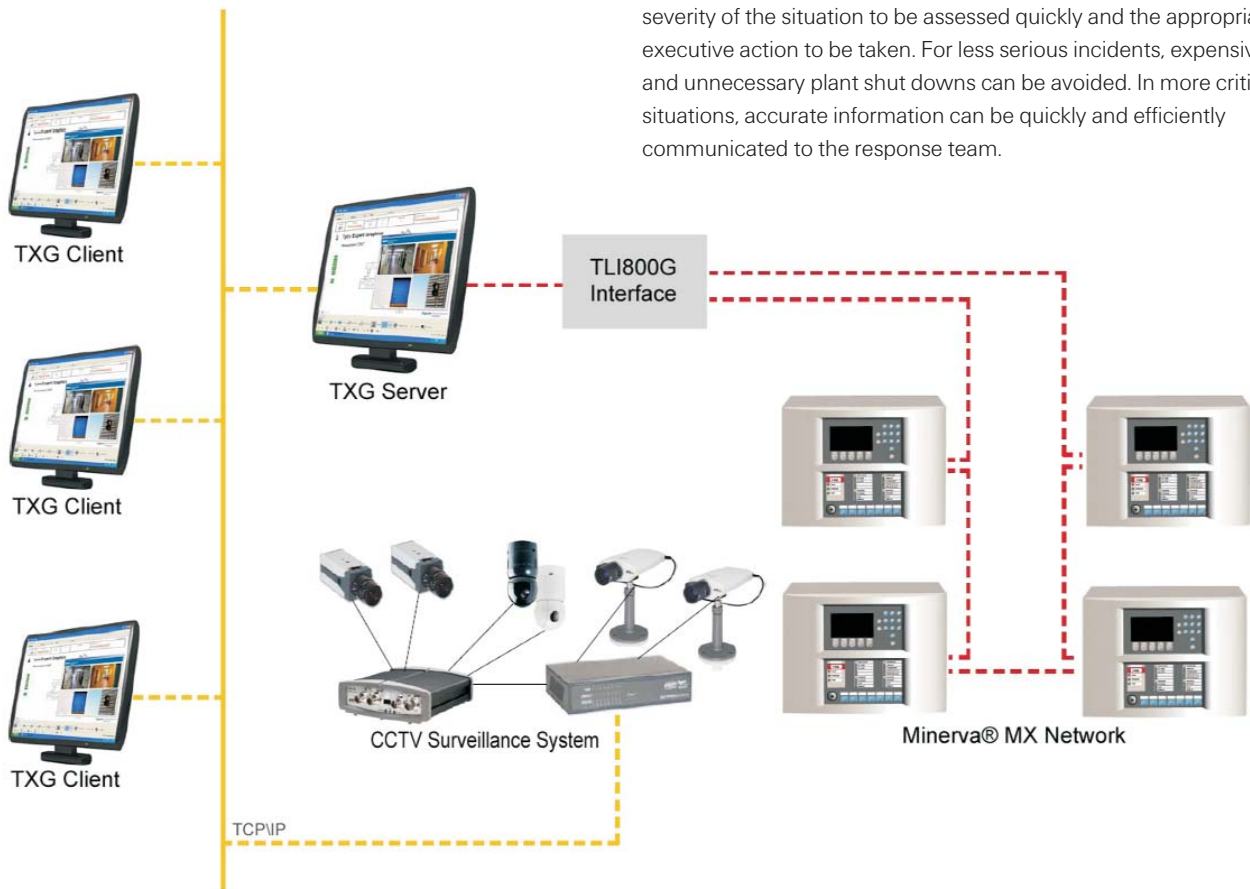
#### Features:

- Windows® based graphical interface with a high resolution, colour display
- Provides annunciation, status display, and control
- Developed specifically to provide monitoring and control of fire protection life safety systems
- Supports MX and Minerva® connected via MXNet or ThornNet networks including bridge support
- Additional support is provided for Simplex 4100U, Zetfas and Fast2000\PBS (Token ring format).
- Multiple workstations can be configured for specific functions or redundant operation
- Single monitor or two monitor (text and graphics) support at each workstation.
- Link up with I.P. CCTV camera systems, no additional wiring, reduced installation cost for a fully integrated fire \ CCTV system
- Compatible with FV300 array based IR flame detectors with built in CCTV
- MX Hotspot, chromatic analogue display. Programmable tracking of analogue values. Changes display colour in response to changes in analogue value from a selected number of MX devices.
- Displays analogue values of MX devices
- Trending diagrams of analogue values. Helps reduce maintenance time and cost
- Export analogue values to Excel for in depth analysis
- Audio descriptions of screens can be played when they are displayed or played when an event occurs

# TXG Tyco Expert Graphics

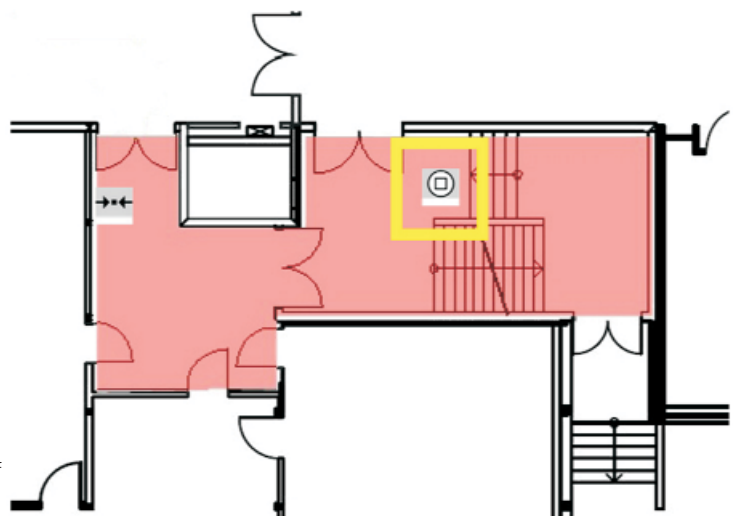
## IP Video

The IP Video feature allows real-time images of the area at risk to be displayed in the event of an alarm or fault. Video capture of the affected area appears on the screen automatically, allowing the severity of the situation to be assessed quickly and the appropriate executive action to be taken. For less serious incidents, expensive and unnecessary plant shut downs can be avoided. In more critical situations, accurate information can be quickly and efficiently communicated to the response team.

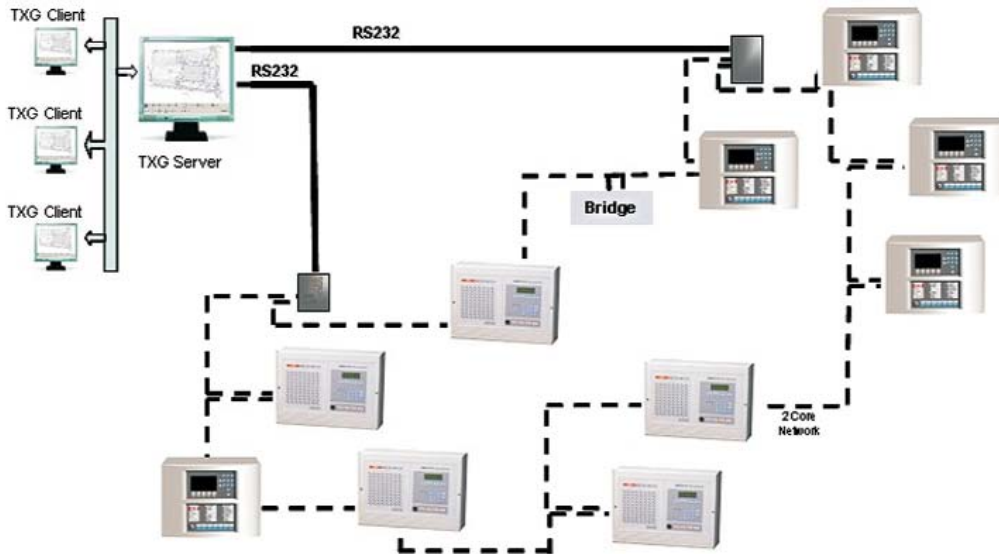


## MX Hotshot

Icons representing the devices being monitored will change colour dependant on status, alarm, normal, fault, isolate etc. In addition to this, selected areas can be highlighted using the chromatic analogue display feature, MX Hotspot. As the analogue value of a monitored point changes the chromatic analogue display will change the highlight colour through a pre-defined range. For example a heat detector assigned MX Hotspot could transit the highlight from blue to red. The number of chromatic steps is dependant on the resolution of the graphics card used.



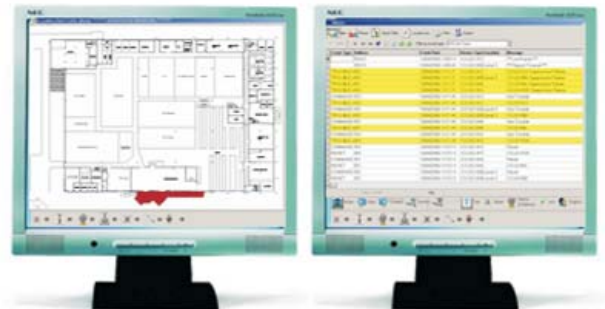
# TXG Tyco Expert Graphics



Connecting bridged networks of Minerva® panels and MX panels

## Additional Functions & Features

- True Client / Server application. Only one database to configure and maintain. Reduced lifetime cost of ownership.
- High level user interface allows end user to make changes to point attributes and layout further reducing lifetime cost of ownership.
- Centralised security administration means that operator accounts are administered through the TXG client's common database
- Mouse, keyboard or touch-screen control with full multimedia compatibility
- Dual language switching
- The ability to display live video when specific predefined alarm conditions occur
- Easy to configure and set-up. No special networking or PC training required

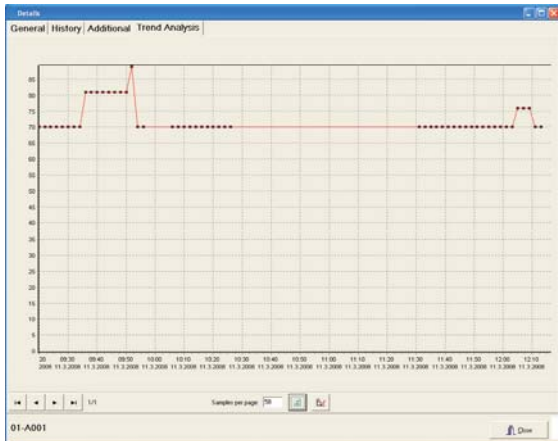


## Dual Monitor Support

Support for two monitors. Typically one monitor displaying the graphics and a second monitor displaying the current alarm/event list

## Ordering Information

508.040.100	TXG USB Dongle/Licence/Software
508.040.001	TXG001 – Single Client Station - first panel
508.040.002	TXG004 – Single Client Station - panels 2 to 4
508.040.003	TXG010 – Single Client Station - panels 5 to 10
508.040.004	TXG020 – Single Client Station - panels 11 to 20
508.040.005	TXG999 - Single Client Station - panels 21 to unlimited
508.040.011	TXG-C Additional Client licences
508.040.021	TXG-MIN80 Minerva driver licence
508.040.023	TXG-ZETA Zetadress/FILnet driver licence
508.040.024	TXG-ZETF – Zetfas/FILnet driver licence
508.040.025	TXG-OPC - OPC Alarm / Event & Data Access Server Licence
508.040.027	TXG-CPP - SIMPLEX CPP driver
508.040.033	TXG-PBS/FAST DRIVER



TXG is fully compatible with FlameVISION array based IR flame detectors with built in CCTV

## Analogue Trends

TXG can be used for displaying and analysing the analogue detector data thus capturing and logging data for long-term studies. Logged detector data can then be used as the basis for a graphical display of the measurement trend which can give an overview of changes in ambient conditions to assist service.

## Notification by Email

Different notification texts can be defined for particular incidents. These are sent by email to a predefined group of people when an event occurs. Automate first line response to faults and alert key personnel, on and off site, to selected events.

## Additional Functions & Features

- Response buttons with configurable icons or text provide control switches specific to any operation being performed
- Uses a combination of symbols, floor plans, pictures, text and video to communicate events

- Standard MX and Minerva® symbol libraries supplied
- Gives instructions on what emergency action should be taken
- Prints maps and instructions to assist response teams
- History logging recallable or printable by event, dates, device, or a host of other available filters
- The advanced filter allows the history report to be specifically limited to a particular range or date period.
- Commands to control outputs from the Graphical User Interface
- Events can be accepted individually or can be "auto-accept"
- Supports all standard PC image file types (i.e. GIF, JPG, BMP), AutoCAD® & Vector file types

For further information on how we can help you, contact your local ADT office:

**Austria - ADT Austria**  
Tel: 662 45 24 60 11  
Website: www.adteurope.com

**Belgium - ADT Security Services SA,**  
Tel: 02 481 08 00  
Website: www.adt-belgium.be

**Czech Republic - ADT Security Center s.r.o.**  
Tel: 267 267 267  
Website: www.adt-sc.cz

**Germany - ADT Deutschland GmbH**  
Tel: 0800 7070 238  
Website: www.adt-deutschland.de

**Ireland - ADT Fire and Security plc**  
Tel: 1620 5888  
Website: www.adt.ie

**Italy - ADT Italy**  
Tel: 02 81806 1  
Website: www.adtitaly.com

**The Netherlands - ADT Security Services B.V.**  
Tel: 010 258 4848  
Website: www.adt-security.nl

**Poland - ADT Poland Sp. Z o.o.**  
Tel: 0 801 801 238  
Website: www.adt.pl

**Portugal - ADT Portugal**  
Tel: 217 510 560  
Website: www.adt-pt.com

**Russia - ADT Russia**  
Tel: +7 (495) 661 2094  
Website: www.adtrussia.com

**Spain - ADT Servicios de Seguridad SL**  
Tel: 902 444 440  
Website: www.adt-es.com

**Switzerland - ADT Switzerland**  
Tel: 0848 40 08 01  
Website: www.adt-ch.com

**United Kingdom - ADT Fire & Security plc**  
Tel: 0800 010 999  
Website: www.adt.co.uk

