



Hosiden Besson Ltd
St. Joseph's Close
Brighton & Hove
East Sussex BN3 7EZ
England
Tel: +44 1273 861166
Fax: +44 1273 777501
Email: info@hbl.co.uk
www.hbl.co.uk

product sheet

IS28 mk4 Banshee™ Audible Warning Device (ATEX 21311X)

- Banshee IS28
Intrinsically safe
- ATEX approved
cert.No: ITS03
ATEX 21311X
- System certificate
cert.No: ITS
Ex 04E21968
- Temperature rated
T5 (+85°C)
- IP66 rated
- 4 Selectable sounds:
Buzz, Fast Sweep,
Slow Sweep, and
Continuous
- Adjustable volume
max - 104 dBA
(high frequency)
94 dBA
(low frequency)

The IS28 Mk4 is the industry standard for sounders used in hazardous environments. This traditional high profile Banshee™ is available in both high and low frequency versions, each with four sounds: Buzz, fast sweep, slow sweep and continuous. Each model is fitted with a volume control.



Product Order Nos. High frequency 8645000
Low frequency 8645100

FM 00755

IS28 mk4 Banshee™ Audible Warning Device



System Scheme Drawing

DRAWING No. 81510

- The circuit in the hazardous area must be capable of withstanding an A.C. test voltage of 500 volts RMS to earth or frame of apparatus.
- Cable parameters are for group IIC Values for groups IIB and IIA are 3 and 8 times respectively those for group IIC.
- IS28 Certificate No ITS03ATEX21311X

INTERTEK TEST & CERT LTD

Vijay K. Varma

VK VARMA

APPROVED DRAWING

CERTIFICATE No.

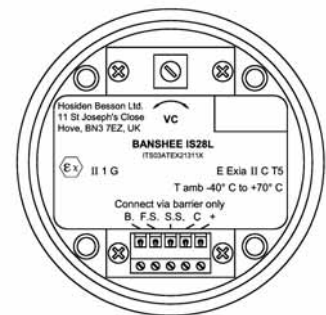
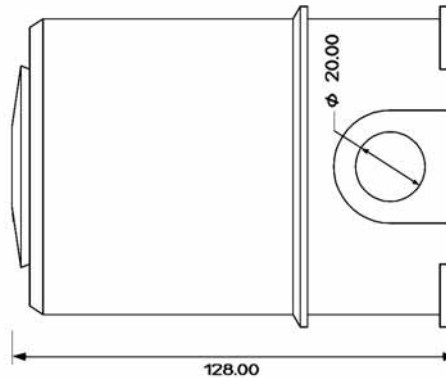
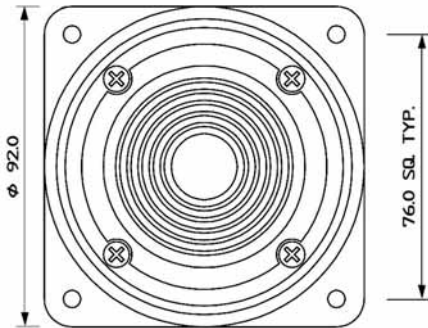
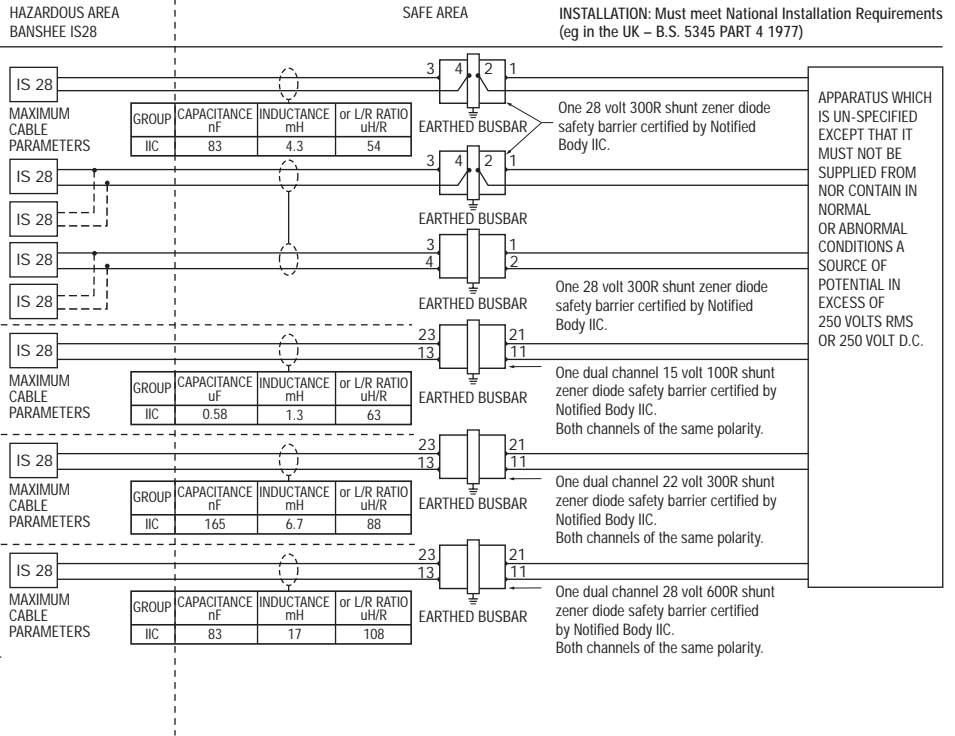
EX 04E21968



Hosiden Besson Ltd.

11 St. Joseph's Trading Estate, St. Joseph's Close
Brighton & Hove, East Sussex BN3 7EZ, England
Tel: +44 1273 861166 Web: www.hbl.co.uk

The copyright in this drawing is the property of Hosiden Besson and the drawing is issued on condition that it is not copied reprinted or reproduced nor its contents disclosed either wholly or in part to any third party without consent in writing from Hosiden Besson Ltd.



Electrical Supply

See system diagrams

The IS28 mk4 must be powered via a zener barrier or other safety isolation device. Either version may be operated with up to 2 units in parallel, but the barrier will restrict the current flow and hence the sound output. If dual-channel barriers are used, then only one IS28 mk4 per barrier can be accommodated.

Incoming wiring may be connected to heavy duty terminal block in base of IS28. The supply then taken via Red & Black leads

to selected sound terminals on the sounder terminal block. Alternatively the incoming wiring can be connected directly to the sounder block.

Connections on IS28 Terminal Block

- + = positive terminal (Red wire)
- B = Buzz sound
- FS = Fast Sweep
- SS = Slow Sweep
- C = Continuous

Connect 0 volt Black wire to required sound terminal

Current consumption

Typical when unit is run from 24VDC via a 28 volt, 300 ohm barrier:-

- Low Frequency - 10mA
- High Frequency - 18mA
- Volume control (VC)
- High Frequency - 104dBa max
- Low Frequency - 94dBa max
- Volume control adjustment is approximately 15dBa