



PC Workstation Security

The ideal "prison assistant"

Features at a glance:

- Freely selectable group and wing interconnection
- Groups and/or wings clearly presented on one screen page
- Make voice contact with a cell by clicking on the cell symbol
- Make selective announcements to freely selectable cells, particular cell types, individual wings or the whole organisation
- Activate and deactivate security functions such as call deprivation, radio deprivation, forced reception, centralization
- Integrate and display personal data
- Monitor and control inputs and outputs, e.g. door monitoring, light deprivation
- Manually transmit text messages and forward calls to freely selectable recipients
- Create different user groups with varying control possibilities
- Switch between duty shifts manually or automatically

ZETTLER® PC Workstation Security

Modern cell call systems in penal institutions, psychiatric hospitals and police stations are constantly taking on additional functions that facilitate the duties of prison officers, enhance security and improve communication with the inmates. The ZETTLER® PC Workstation Security from Tyco flexibly meets all demands placed on today's prison models.

The capabilities and features of the PC Workstation Security depend on the size of the organisation. It is used in centralised or decentralised configurations, depending on the form of prison. Mixed wing forms are also possible. A centralised PC Workstation Security can be used to organise up to fifteen wings.

Forming individual groups

Both centralised and decentralised PC Workstations Security have a number of features that greatly facilitate the organisation of wings. Cells within a wing can be combined to form groups serviced by autonomous teams. These combinations are called up by selecting the corresponding duty shift and can be modified at any time in a few simple steps. And of course wings can be combined as desired at times of low staffing requirements.

Easy to operate

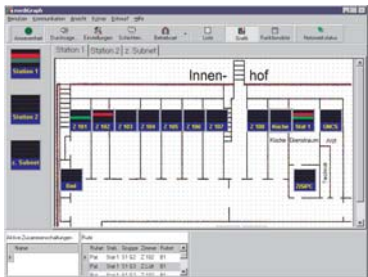
The centralised ZETTLER® PC Workstation Security provides an overview of an entire organisation, even if it is split across several buildings. For greater convenience, it is possible to hook up two screens, one monitor displaying the organisation overview and the other the wing called up.



To facilitate operation, touch screens can also be connected. The ability to make speedy voice contact with individual cells, groups/wings and the entire organisation is a standard feature. Announcements and conversations can be made discreetly using a handset or in

handsfree mode using a microphone and loudspeakers.

Overview at the click of a mouse



Centralised PC Workstations Security can manage up to fifteen wings for small and medium-size penal institutions. The duty room is an ideal location for a workstation

showing simplified wing floor plans as well as original layout diagrams. Easy, menu-controlled operation, detailed information in clear text and the clear graphical representation of all calls, messages and presences helps to ensure duty staff always have an overview of the wing.

Assigning mobile answer stations

The terminals of pager/PNA and PABX systems (e.g. cordless DECT terminals) can be flexibly assigned to the wings, groups, cells and beds, enabling all prison staff to be easily integrated into the organisation. All assignments to the pager and PABX systems (DECT) are synchronised automatically simply by switching between the duty shifts.

Logging events

The software module mediLog enables all events in the communication system to be logged as required. The database can be exported for analysis. Password protection blocks unauthorised access to sensitive data.

Rapid voice contact

Tycos offers a PCAIM audio interface module for connection to a PC Workstation Security with mediGraph. As well as announcements and conversations, it also allows calls to be answered. These speech functions are activated automatically by lifting the handset when idle or switching on handsfree mode. The user can switch to Push-to-Talk mode at any time while voice contact is under way, preventing any undesired monitoring of conversations in the duty room.



If the PC Workstation Security is not operational, the PCAIM audio interface module switches to emergency mode. The most important call alarm in the wing is then signalled optically and acoustically on the PCAIM audio interface module and can be answered by lifting the handset.

For ease of cleaning, the PCAIM audio interface module has an easy-wipe membrane keypad.

Always the right alternatives

As well as the PC Workstation Security, Tyco also offers a range of other answer options to match the size and organisation of a prison, psychiatric hospital or police station.



The compact ZETTLER® NCS Nurse Control Station for duty rooms and checkpoints can be used as a wing, group or parallel call terminal. All calls, alarms and current prison officer presences are shown clearly arranged on an illuminated display. The NCS Nurse Control Station is operated using a keypad on which frequently used menu items can be defined as hotkeys.

Features in detail

Alongside the basic PC Workstation Security functions already described, additional functions can be added through the use of a variety of software modules.

PC Workstation Security with mediGraph

mediGraph allows a Medical 800 Security call system to be controlled centrally and all information about a wing or the entire call system to be presented in graphic form. mediGraph also enables the following functions:

- Manual sending of text messages to freely selectable recipients with display facility such as pagers or DECT handsets.
- Manual forwarding of calls to freely selectable recipients. This allows a call to be accepted at a central location. The call can then be forwarded to the officer responsible together with predefined information, thereby helping to save time.
- Announcement to freely selectable cells. This allows up to 8 cells from the same or different wings to be combined to form a group. A maximum of 5 groups can be defined and stored for reuse.
- In the event of a crisis situation in a prison or psychiatric hospital, it is possible to listen in to a cell unnoticed.
- The PC Workstation Security allows cells to be relocated to other wings.
- Any number of users can be set up for mediGraph. User groups with different settings and control possibilities can be created. Password protection is also possible.



PC Workstation Security with mediPage

mediPage allows the receivers of pager/PNA, DECT or PABX systems to be configured, adapted to the organisation and assigned to shifts.

This software module offers additional functions:

- mediPage can be used without mediGraph Security. The relevant receiver templates are activated by making changes to the interconnection statuses on the Medical 800 Security displays. The receiver templates are configured with mediPage. A shift switch is also performed using the manual or time-controlled shift switch facility.
- The receivers of the relevant personnel groups can be optionally assigned to a complete wing, one or more groups or a single cell or bed.
- To simplify receiver assignment, several receivers can be combined to form a receiver group. Receiver groups can then be assigned to selected wings, groups, cells or beds.
- To ensure that the organisation is designed as flexibly as possible, all calls for a particular receiver or receiver group can be temporarily diverted to a different receiver.
- Any number of users can be set up for mediPage. Additional user groups with different settings for access rights can be added. Password protection is also possible.
- All activities of forwarding calls to pager/PNA/DECT receivers or telephone systems are logged with a time stamp. All logs are saved in files and can be accessed at any time.



Switching shifts with ShiftSwitcher:

As before, shifts can be switched with the PC Workstation Security. ShiftSwitcher offers additional functions:

- ShiftSwitcher can be used to manually change the duty shift, the receiver templates and the interconnection statuses at any PC workstations that are connected to the Medical 800 Security network.
- Windows Task Manager can be used to start ShiftSwitcher after freely definable times in order to control modification of the relevant duty shift, receiver templates and interconnection statuses by time.
- If neither the PC Workstation Security nor time-controlled or manual shift switching are programmed, the shift can be switched by means of the Medical 800 Security display.



For further information about Tyco products and services, please contact one of our sales offices or visit our website at www.tycoemea.com. Tyco reserves the right to modify or withdraw offered products or services without prior notice.

Company stamp:

