



## PC Workstation

The ideal "care assistant"

### Features at a glance:

- Freely selectable group and ward interconnection
- Clear representation of groups and/or wards on one screen page
- Voice contact a room by clicking on the room symbol
- Direct voice contact with a specific bed
- Selective announcements in rooms in which care personnel are present
- Selective announcements to freely selectable rooms, groups, wards and the entire organisation
- Display of external messages and faults
- Relocation of rooms by ward
- Manual transmission of text messages and forwarding of calls to freely selectable recipients
- Extended setup options for users, user groups and access rights
- New options for switching between duty shifts

### ZETTLER® PC Workstation

Care in hospitals, nursing homes and similar institutions must be organised down to the smallest detail if the needs of the patients are to be met and costs are to be managed efficiently. The ZETTLER® PC Workstation from Tyco flexibly meets all demands placed on today's care models.

The capabilities and features of the PC workstation depend on the size of the organisation. It is used in centralised or decentralised configurations, depending on the form of care. Mixed care forms are also possible. A decentralised PC workstation can be used to organise up to fifteen wards.

### Forming individual care groups

Both the centralised and decentralised PC workstations have a number of features that greatly facilitate the organisation of care services. Rooms within a ward can be combined to form groups serviced by autonomous teams. These combinations are called up by selecting the corresponding duty shift and can be modified at any time in a few simple steps. And of course wards can be combined as desired at times of low nursing requirements.

*a vital part of your world*

**tyco**

*Fire & Integrated  
Solutions*

## Easy to operate

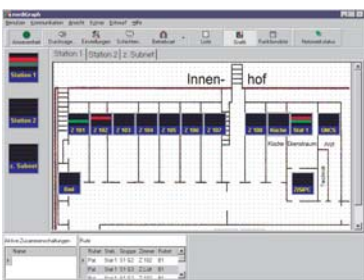
The centralised ZETTLER® PC Workstation provides an overview of an entire organisation, even if it is split across several buildings. For greater convenience, it is possible to hook up two screens, one monitor displaying the organisation overview and the other the ward called up.



Enhanced user convenience on the touch screen

To facilitate operation, the monitors are also available as touch screens. The ability to make speedy voice contact with individual beds, rooms, groups/wards and the entire organisation is a standard feature. Announcements and conversations can be made discreetly using a handset or in handsfree mode using a microphone and loudspeakers.

## Overview at the click of a mouse



Decentralised PC workstations can manage up to fifteen wards for small and medium-sized care organisations. The nurse duty room is an ideal location for a workstation showing simplified ward floor plans

as well as original layout diagrams. Easy, menu-controlled operation, detailed information in clear text and the clear graphical representation of all calls, messages and presences helps to ensure duty staff always have an overview of the ward.

## Assigning mobile answer stations

The terminals of pager and PABX systems (e.g. cordless DECT terminals) can be flexibly assigned to the wards, groups, rooms and beds, enabling all care staff to be easily integrated into the organisation. All assignments to the pager and PABX systems (DECT) are synchronised automatically simply by switching between the duty shifts.

## Logging events

A software tool enables all events in the communication system to be logged as required. The database can be exported for analysis. Password protection blocks unauthorised access to sensitive data.

## Rapid voice contact

Tyco offers a PCAIM audio interface module for connection to a mediGraph PC workstation. As well as announcements and conversations, it also allows calls to be answered. Activation of call answering, voice contact with rooms and announcements are carried out using the handset or with the PCAIM audio interface module in handsfree mode. The user can switch to Push-to-Talk mode at any time while voice contact is under way, preventing any undesired monitoring of conversations in the ward room.



If mediGraph is not operational, the PCAIM audio interface module switches to emergency mode. The most important call or alarm in the ward is then indicated optically and acoustically on the PCAIM audio interface module and can be answered using the module. Calls cannot be deleted inadvertently.

For ease of cleaning, the PCAIM audio interface module has an easy-wipe membrane keypad.

## Always the right alternatives

As well as the PC workstation, Tyco also offers a range of other answer options to match and size an organisation of a hospital or nursing home.



The compact ZETTLER® NCS Nurse Control Station for duty rooms and checkpoints can be used as a ward, group or parallel call terminal. All calls, alarms and current care personnel presences are shown clearly arranged on an illuminated display. The NCS Nurse Control Station is operated using a keypad on which frequently used menu items can be defined as shortcuts.

The room terminals of the ZETTLER® control units offer all the basic functions of an answer station: call acceptance, storage and deletion.

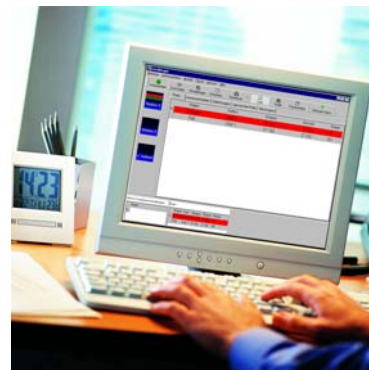
## New features in detail

### mediGraph PC workstation:

- Manual sending of text messages to freely selectable recipients with display facility such as pagers or DECT handsets.
- Manual forwarding of calls to freely selectable receivers. This allows a call to be accepted at a central location. The call can then be forwarded to the relevant nurse together with predefined information (e.g. tea, pain relief), thereby helping to save time.
- Announcement to freely selectable rooms. This allows up to 8 rooms from the same or different wards to be combined to form a group. A maximum of 8 groups can be defined and stored for reuse.
- A room or cell can be monitored without triggering an optical (audio LED) or acoustic (gong) signal. This is required especially if monitoring is to remain unnoticed, e.g. monitoring a baby ward or if there may need to be an emergency response in a secure institution such as a prison or a psychiatric hospital.



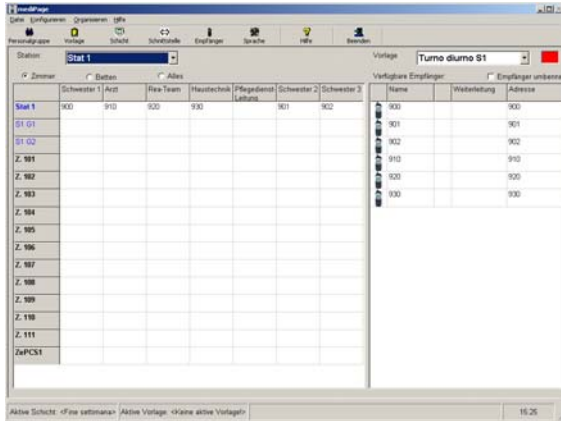
- To simplify configuration of the user interface, object symbols can be copied and inserted at multiple locations. The object symbols and signal colours can also be adapted to the actual room signal lamp. As well as symbols for rooms, bed symbols can also be created. It is now also possible to highlight several symbols at the same time and change their properties simultaneously.



- The ward answer station now allows rooms to be relocated between wards.
- Any number of users can be set up for mediGraph. Additional user groups with different settings for access rights can be added. Password protection is also possible.

**mediPage PC workstation:**

- The user interface of mediPage has been completely redesigned.



- mediPage and CallEscalator can also be used without mediGraph. The relevant receiver templates are activated by making changes to the interconnection statuses on the displays. The receiver templates are configured with mediPage. A shift switch is also performed using the manual or time-controlled shift switch facility.
- The receivers of the relevant personnel groups can be optionally assigned to a complete ward, one or more care groups or a single room or bed.
- To simplify receiver assignment, several receivers can be combined to form a receiver group. Receiver groups can then be assigned to selected wards, care groups, rooms or beds.
- To ensure that the care organisation is designed as flexibly as possible, all calls for a particular receiver or receiver group can be temporarily diverted to a different receiver.
- Any number of users can be set up for mediPage. Additional user groups with different settings for access rights can be added. Password protection is also possible.
- All activities of forwarding calls to pager/DECT receivers or telephone systems are logged with a time stamp. All logs are saved in CSV files (text files for importing into Excel or a database) and can be accessed at any time.

**ShiftSwitcher:**

As before, shifts can be switched with mediGraph. The "ShiftSwitcher.exe" application offers new, additional functions:

- The ShiftSwitcher application can be used to manually change the duty shift, the receiver templates and the interconnection statuses at any PC workstations that are connected to the Medical 800 network.
- The Windows Task Manager can be used to start the ShiftSwitcher application after freely definable times in order to control modification of the relevant duty shift, receiver templates and interconnection statuses by time.
- If neither mediGraph nor time-controlled or manual shift switching are programmed, the shift can be switched with the help of the Medical 800 display.



We are partners of the Fraunhofer Gesellschaft in the "Care 2020" research programme



For further information about Tyco products and services, please contact one of our sales offices or visit our website at [www.tycofireandsecurity.com](http://www.tycofireandsecurity.com). Tyco reserves the right to modify or withdraw offered products or services without prior notice.

Company stamp:

