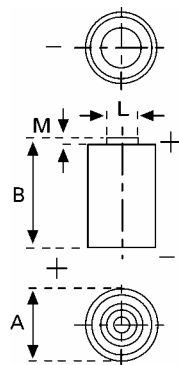


Data Sheet

Type Number 6231
Designation IEC ---
System Li-Manganese dioxide / Organic Electrolyte

UL Recognition:..... pending
Nominal Voltage 6 V
Typical Capacity C 170 mAh
 Load 13 kOhm, at 20°C down to 4 V



Weight (approx.) 8,8 g
Volume 3,1 ccm
Coding..... Manufacturing Quarter/Year by letter code

Temperature Ranges

	min	max.
Storage	-20°C	70 °C
Discharge	-20°C	65°C

Dimensions

	min	max.
Diameter (A)	12,8	13
Height (B)	24,4	25,1
Shoulder Diameter[E].....	5,5	
Shoulder Height [C].....	1,1	

Segment Electronic

Main Applications Photo
 Electronic

Typical Capacities (at 20°C)

Discharge Type	Load	End Voltage:	4.0 V
Continuous 24h/d,7d/w Current [μ A]:	13000 Ω	Time: Capacity [mAh]: Energy [MWh]:	395 h 170 945

All Data contained herein is for single cells

For battery applications, performance data may vary from single cell data, depending on specific battery configuration