



SY125 Lens

Ultra wide - Multi Megapixel - No Distortion

Features:

- Ultra wide field of view sees the complete image while the operator can digitally pan-tilt-zoom (dPTZ)
- Patented Linear Optical Technology™ enables a rectilinear lens with very low distortion for maximum resolution
- Supports multi megapixel resolution cameras for demanding applications
- Pan focus keeps near and far objects continuously in focus without lens adjustment
- Available with CS-mount or C-mount and with auto or manual iris

These lenses have been specially developed for MegaPixel cameras using Linear Optical Technology® which allow the creation of an ultra wide field of view without distortion. This distortion correction is done optically in the lens without the need for any additional imaging software.

Some examples of applications where these lenses could be utilised are:

Universities & Schools
External Car Parks
Parking entry points
Train & Tram Platforms
Power stations
Warehouses
Retail / Point of Sale areas

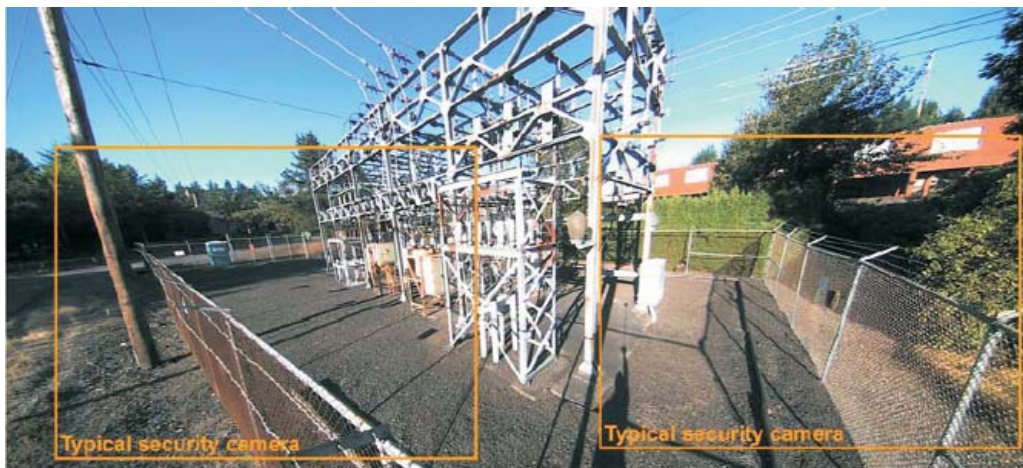
SY125 Lens

DATA SHEET

Technical Specifications

Lenses	SY125M CS-mount manual iris lens		
	SY125A CS-mount DC-autoiris lens		
	MY125M machine vision C-mount manual iris lens		
Sensor size	1/4"	1/3"	1/2.5" *
Field of view (H)	109°	125°	135°
Field of view (V)	93°	109°	119°
Field of view (D)	122°	137°	141°
Lenses	SY125M CS-mount manual iris lens		
	SY125A CS-mount DC-autoiris lens		
	MY125M machine vision C-mount manual iris lens		
Focal length	1.3 mm		
F/#	F/1.8 to closed		
Resolution	Up to 5 megapixels		
Distortion (H)	<3% barrel (for 1/3" sensor)		
Pan-focus distance	10cm to ∞		

*Some vignetting may occur using a 1/2.5" sensor depending on sensor mechanical tolerance.



Theai 135° Ultra Wide Lens

Ordering Information

ADSY125A	1.3mm ultra wide angle MEGApix auto iris CS mount lens. Incorporates patented Linear Optical Technology which allows an ultra wide field of view without barrel distortion common in other wide angle lenses (Typically <3% distortion). Suitable for cameras of up to 5MP and for use with sensors up to 1/2". Note that images from 1/2" cameras should be cropped vertically to eliminate evidence of vignette (dark corners).
ADSY125M	1.3mm ultra wide angle MEGApix manual iris CS mount lens. Incorporates patented Linear Optical Technology which allows an ultra wide field of view without barrel distortion common in other wide angle lenses (Typically <3% distortion). Suitable for cameras of up to 5MP and for use with sensors up to 1/2". Note that images from 1/2" cameras should be cropped vertically to eliminate evidence of vignette (dark corners).

For further information on how ADT can help you, contact your local office or phone free on **0800 010 999** or visit us at www.adt.co.uk

CE

Head Office: ADT Fire and Security plc, Security House, The Summit, Hanworth Road, Sunbury-on-Thames, Middlesex TW16 5DB.
ADT and ADT Always There is a registered trademark of ADT Services AG and used under license.
ADT reserves the right to modify or withdraw any product or service without notice.

Ref No PSS440A Issue 1 November 2011

© 2011 Tyco International



ADT Always There®